

Working Poverty and Workplace Harm: Is there a connection?

A global look at the link between financial struggle and workplace safety in lower and middle-income countries.

Section 1

The Global Landscape of Working Poverty

OSH-Connect is creating a publicly available **single-source global database** of country-level OSH statistics that will help turn complex data into actionable insights to improve risk management and worker health globally.

This report analyses data collected in 2019-2021 from 104 predominantly lower and middle-income countries spanning all 6 World Health Regions.

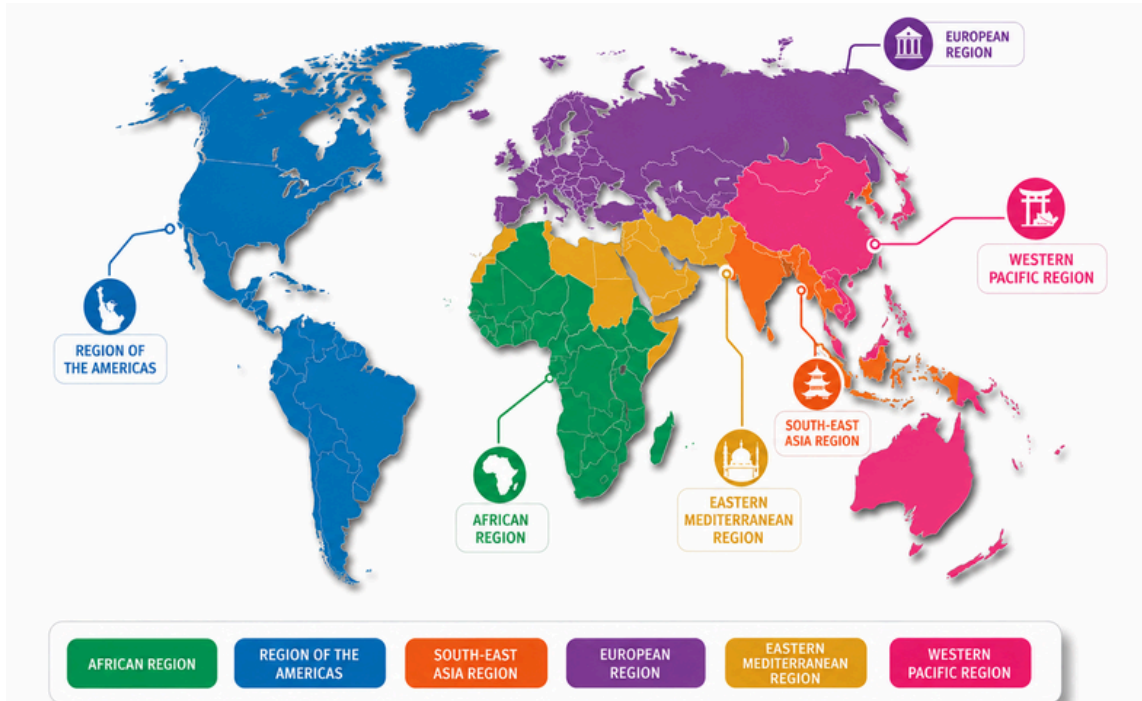


The data is from the OSH-Connect project, compiled by Monash University with funding from the Lloyd's Register foundation.



Regional Diversity

The data includes perspectives from Africa, the Americas, Europe, the Eastern Mediterranean, the Western Pacific, and South-East Asia.



WHAT IS WORKING POVERTY?



Between 2015-2022 the ILO defined the working poverty rate as below **USD \$1.90 PPP**.



HOW MUCH DOES IT AFFECT WORKERS?

The median working poverty rate across the 104 nations included in this analysis is

2.7%



Rates vary markedly between nations.



WHY THIS MATTERS

This report investigates the relationship between having **high numbers of workers in poverty** and the risk of occupational injury and **violence and harassment**.



HIGH NUMBERS OF WORKERS IN POVERTY
More workers earn less than **USD \$1.90 PPP** per day.



GREATER RISK OF WORKPLACE HARMS

- Occupational injuries
- Violence and harassment



IMPLICATIONS
Addressing working poverty is essential for safer, healthier, and more dignified work for all.

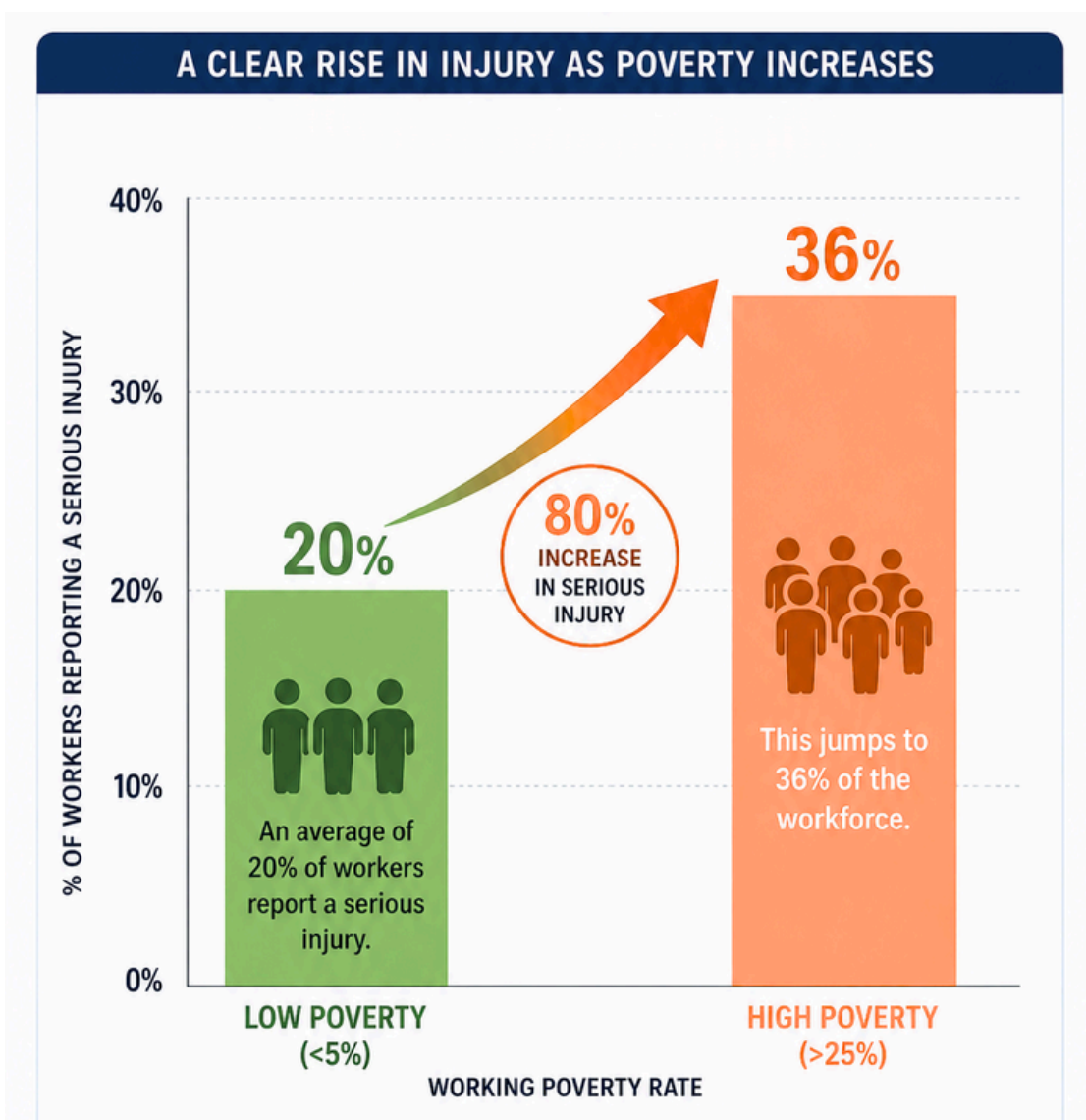
Section 2

Poverty and the Risk of **Serious Injury at Work**

0.51

Moderate Correlation

Between working poverty rate and reported serious injuries at work.



High levels of working poverty

Are moderately associated with a higher risk of serious workplace injury.

IN THE 10 COUNTRIES WITH THE HIGHEST RATE OF INJURIES

The median working poverty rate is

13.6%



These countries have much higher levels of working poverty.

IN THE 10 COUNTRIES WITH THE LOWEST RATE OF INJURIES

The median working poverty rate is

0.7%



These countries have much lower levels of working poverty.



NOTABLY, THE **20**

countries with the lowest reported injury rates all have working poverty rates below the **2.7%** median.



Section 3

Poverty and the Experience of Violence/Harassment at Work

Economic vulnerability is also related to other important occupational safety outcomes.

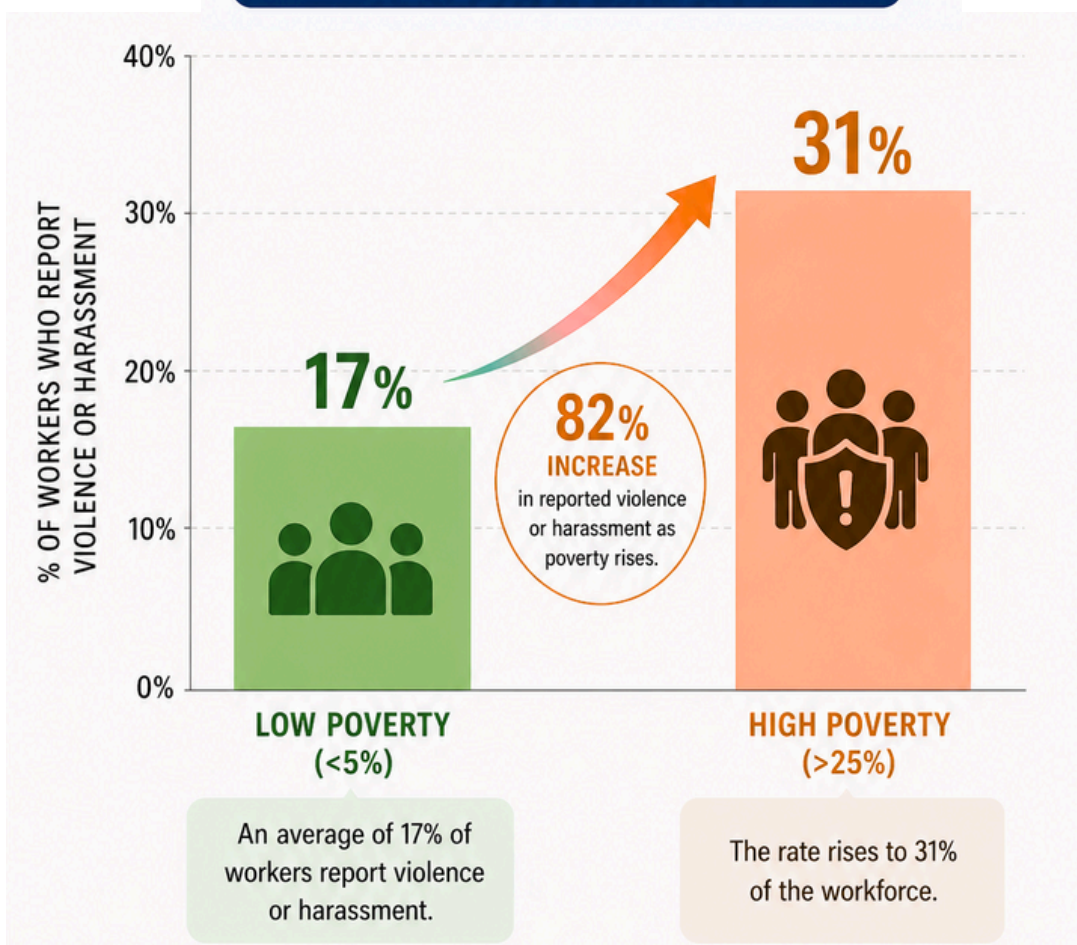
*Violence or harassment includes physical, psychological, and sexual violence or harassment.

0.49

Moderate Correlation

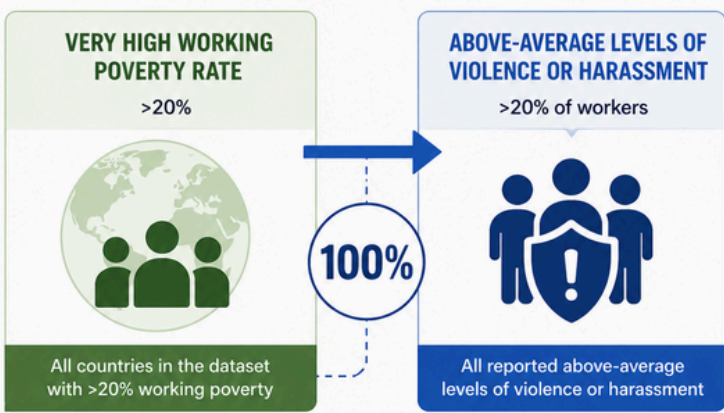
Between poverty rate and experience of violence or harassment at work.

PERCENTAGE OF WORKERS WHO REPORT VIOLENCE OR HARASSMENT



High levels of working poverty

Are moderately associated with a higher rate of workplace violence and harassment.



In this global dataset, every single country with a "very high" (>20%) working poverty rate reported above-average levels of workplace violence or harassment (>20%).

Contact us

Email: info@osh-connect.com

Webpage



osh-connect.com

Subscribe



[Healthy Working Lives Newsletter](#)

Follow



[Healthy Working Lives LinkedIn](#)